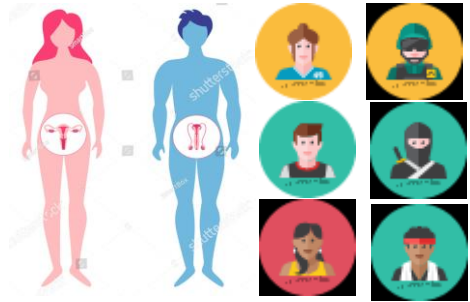


A Holistic Approach to Sexual and Reproductive Health (SRH)

Once upon a time Defence Primary Healthcare teams approached SRH as a standalone item and not a core part of every patient contact or decision



Everyday Patients were seen in a variety of differing consultations without the impact of /on their SRH necessarily being considered

One day a Community of Practice approach was proposed to develop a holistic broader view of SRH and improve patient care

Sexual & Reproductive Health Community of Practice



Because of that, a number of small projects have run focussing on Menopause, Health Education, access to better Post pregnancy healthcare all in a Multi-disciplinary team approach. Focused on meeting patient need

UNTIL FINALLY The story continues, we have just invited our Dental colleagues to join the Community.