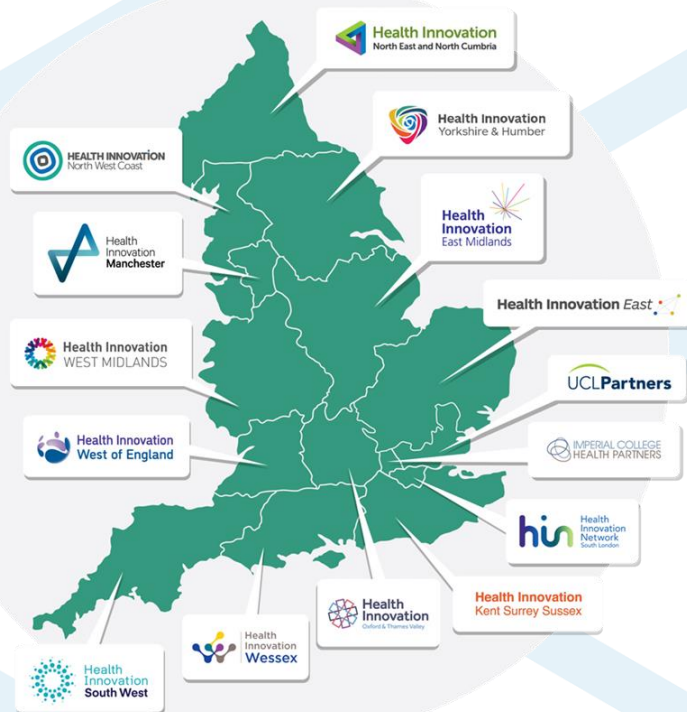


# What is Health Innovation North East and North Cumbria

15 regional HINs first established by NHS England in 2013 to spread health innovation at pace and scale.



1. Improve population health

2. Transform patient safety

3. Generate Economic growth

Three Original Aims

# What we do...

- Each Health Innovation Network covers a distinct geography and is **embedded within Integrated Care Board (ICB) structures**
- **“Innovation arm of the NHS”** - interface between industry, academia, health and social care
- Foster **regional collaborations and partnerships** whose collective aim is to address regional inequalities and generate economic growth – “Health & Wealth”
- Work with ICB and partners to understand **unmet needs and priorities** and co-design/co-deliver innovation solutions (e.g. Northern Cancer Alliance)
- Support **adoption & spread** of local innovations & **‘import’** what works best elsewhere



# How we do it...

- We work with our member organisations including NHS Trusts and universities, as well as the regional life sciences sector, to **identify, evaluate, adopt and disseminate transformative innovation**.
- We are an 'honest broker' to facilitate collaborations between academia, health and social care organisations, third sector, patients, the public and the healthcare industry members **to improve population health outcomes and generate economic growth** across the region.
- Use the **Innovation Pathway** as a means to articulate the bespoke services that we can provide to support an innovator create, develop, and commercialise their innovation and have it adopted by the NHS
- Commission **delivery partners** from the regional healthcare infrastructure to support us in the provision of these services.

